



NEOVERA INSIGHT

Gain the insight you need to stay ahead of threats.

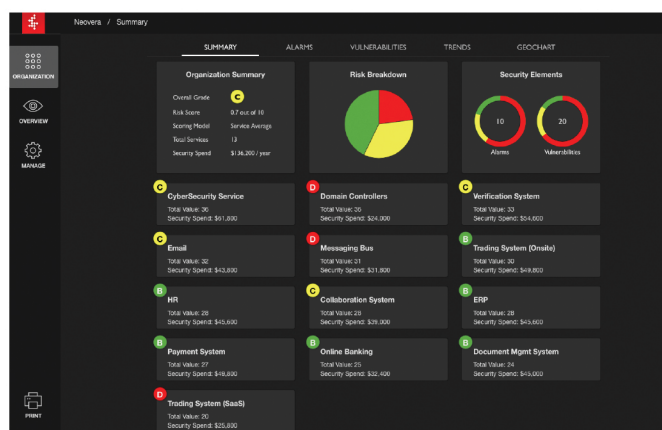
The security of your enterprise is mired in complexity. What is your exposure? Where are attacks happening? How are you vulnerable? The answers are scattered across your infrastructure in the form of logs that require analysis, alerts that must be reconciled, controls that require auditing, and risks that need mitigating.

The challenge is bringing this all together and gaining insight in real-time. Executives, IT managers and operations teams need actionable information so that they can calibrate a response, quantify risk, provide transparency, and achieve compliance. Neovera Insight helps you make sense of the deluge of data – in real-time.

Neovera Insight & Visualization – For All Business Services

Neovera Insight is real-time security insight and visualization tool that delivers dashboard-based views of your organization's business service security posture. Whether you're an executive, IT manager, engineer or architect, Neovera Insight provides a common taxonomy for identifying the weakest link in your IT and business services infrastructure – even into the cloud. Quickly determine your security posture, business risk, and efficacy of your security investments.

Fully automated and cloud-based, Neovera Insight cuts hours off previously time-consuming security assessment and reporting tasks.



Neovera Insight Organization Summary Screen



NEOVERA

INSIGHT

Key Features & Benefits



Gain Insight into the Security Posture of Critical Business Services

Strengthen business continuity and extend recovery beyond your four walls through geo-separation of critical data at a secure secondary location.



Drill Down to Individual IT Assets

View the security posture of the IT assets that power your business services. Identify risks, vulnerabilities, alerts, and alarms stemming from firewalls, switches, operating systems, cloud platforms, user devices, and more, and correlate these to your overall security posture.



Combine Disparate Data Sources for Unparalleled Insight

Neovera Insight integrates with your existing security architecture and systems (e.g. SIEM, log collection systems) to aggregate, analyze and visualize disparate alarm and vulnerability data on any device – mobile or desktop.



View Your IT Security Score Whenever You Need It

Don't wait around for semi-annual security assessments, get a quick and concise real-time visualization of your security score – by business service and associated spend – so that you can mitigate risk and non-compliance with speed and accuracy. Configured to your security and risk tolerance levels and aligned with NIST guidelines, systems and assets are scored an A-F scale and red, yellow, green color scheme.



Evaluate the ROI of Security Investments

View security spending by asset and business service. Quickly see where spending is allocated, how effective it is, and what adjustments need to be made. Easily export ROI performance data for integration with your financial management system.



Visualize Security Threats at the Source

Geo-location reporting provides a map-based view of security threats so that your organization can better visualize and understand where past and current threats originate.



Achieve Full Transparency From Any Device

Because Neovera Insight is cloud-based, you can quickly understand your security posture, wherever you are. Unlike traditional tools that are localized to your PC, Neovera Insight is accessible from any device – desktop, tablet, phone, or projector. You can also export reports and dashboard views with one-click.



View Historical Security Performance

View historical security trends of your individual business services, assets (firewalls, switches, etc.), and the organization as a whole.